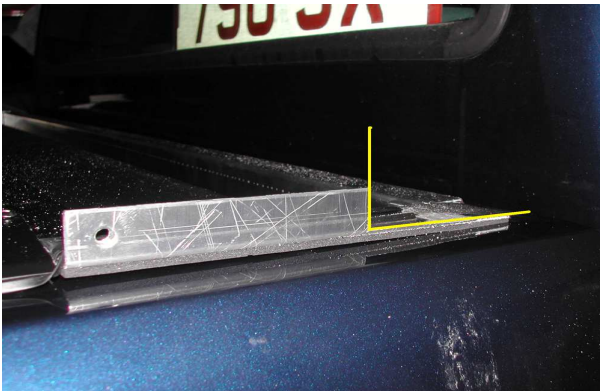


Additional suggestions for combining Roll and lock tonneau cover with single roll bar

Fitting kit required:- 4 no. M8 rivnuts

The roll and lock tonneau cover can be adapted to work with a single roll bar in the following manner



Remove the top cover and use a hacksaw to cut a notch out of the cover support bracket. The fitting of the rivnut is illustrated using a specialist tool, it can however be satisfactorily fitted using a small hand tool.

(A rivnut is necessary because access to the underside is restricted)



The front hoop of the roll bar is bolted in place using the rivnut previously fixed, and a ratchet strap may be needed to adjust the span of the two legs, to achieve required width. The rear roll bar fixing may use the rivnut method, or the nut and bolt method.



Cutting a notch from the corners of the roll and lock cover can be a simple square cut, or if you prefer, a circular hole may be neater, using a hole cutter or similar tool. Once in place, any water ingress escapes through roll and lock drain holes from the base of the canister.