



THE ROLL-N-LOCK DIFFERENCE

What sets **ROLL-N-LOCK**® apart from all other tonneau covers is not just what you can see... the rich appearance of powder coated aluminum and rugged bilaminate vinyl, but also what you cannot see... the patented design of its slatted aluminum substrate. This extruded aluminum undercarriage provides **ROLL-N-LOCK** its tough and rugged, hard cover characteristics and unmatched level of truck bed security. When you combine this blend of aesthetic refinement and structural integrity with **ROLL-N-LOCK's** unmistakable retractable movement, you then come to understand and appreciate the **ROLL-N-LOCK** difference.





M-SERIES

RETRACTABLE TRUCK BED COVER

INNOVATION

ROLL-N-LOCK® M-SERIES™... the most advanced retractable truck bed cover made, has redefined the rules for truck bed security. From its retractable function, which permits opening or closing in literally seconds, to its rigid, vinyl-over-aluminum laminated construction, this hybrid cover offers everything other covers do not. There are no snaps to manipulate, there is no roll or bundle to lash down or stow, no cross bars to negotiate, no fabric shrinkage to struggle with and, best of all, no worries about the security of cargo. The **ROLL-N-LOCK** retractable bed cover... by far the most sophisticated and versatile truck bed cover made.

QUALITY

Great quality originates not only from great materials, but also from forward-thinking design. The **M-SERIES'** groundbreaking blend of refinement and capability stems from its revolutionary, vinyl-over-aluminum construction. Each slat is rotatively joined by an interlocking hinge. It is the geometry of this uniquely-contoured hinge that lends **ROLL-N-LOCK** its strength, roll compactness and quiet, smooth non-binding movement. Close examination of the **ROLL-N-LOCK** hinge in the flat position reveals the fact that each slat is inseparably locked together, yet when rotated no metal-to-metal contact occurs.



M-SERIES

FEATURES & BENEFITS



MULTIPLE LATCHING POSITIONS

With just a turn of the lever, the **ROLL-N-LOCK** bed cover slides open. As the cover is pulled back using the convenient built-in pull strap, the patented ratchet-style locking mechanism latches in place at 1/4, 1/2, 3/4 or fully-closed positions.



UNIQUE CONSTRUCTION

A patented aluminum undercarriage lies just beneath the vinyl surface treatment, providing a tough, rigid surface with the outward appearance of a traditional soft tonneau cover. The unique, contoured hinge design provides smooth, frictionless rotation while maximizing cargo space.



LOW PROFILE DESIGN

The **M-SERIES**® sleek appearance is enhanced by a low profile, aerodynamically-styled housing lid. Black, powder coated aluminum components define its rugged, yet refined appearance.



FINGER INSULATION GRIP

A finger insulator grip allows the handle to be grasped without fingertips being burned, promising hassle-free operation in the world's hottest climates.



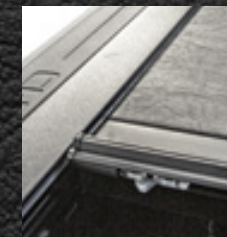
KEY SLOT COVER

Providing an extra layer of weather protection, a key slot cover keeps ice out and prevents the lock from freezing in colder climates.



CLAMP-ON INSTALLATION

ROLL-N-LOCK's patented clamp-on track design greatly simplifies the installation process while minimizing the need for drilling holes on most trucks.



BUILT-IN TAILGATE LOCK

Keep cargo safe with the integrated tailgate lock. The patented, four-point locking system provides instant security by simultaneously securing the tailgate and bed cover. *Not available on all models.*



TORSION SPRING EQUIPPED

A torsion spring drive makes opening the cover effortless. Its heavy-duty design and 3" aluminum casing provide years of reliable operation.



COMPACT HOUSING AND FLUSH HANDLE

Averaging only 7 1/4" deep, **ROLL-N-LOCK** provides the most compact housing of any retractable truck bed cover, preserving the truck's most valuable feature — cargo space.



A-SERIES

RETRACTABLE TRUCK BED COVER

ALL NEW. ALL ALUMINUM

Introducing the all-new, all aluminum **A-SERIES™** retractable tonneau cover. Built with the same rugged durability as the well-known **M-SERIES™**, this ground-breaking new product includes a long list of innovative design features that only **ROLL-N-LOCK®** can provide. The unique, powder-coated aluminum cover body of the **A-SERIES** is bound together by a patent pending hinge technology that delivers a nearly impenetrable seam. Unlike other aluminum bed covers that provide only “out of sight, out of mind” security, **ROLL-N-LOCK's A-SERIES** is the real deal. With no exposed rubber seams and a patented tailgate locking system, knife-wielding thieves don't stand a chance. Just like its **M-SERIES** counterpart, the **A-SERIES'** tonneau cover permits opening or closing in literally seconds, there are no snaps to manipulate or heavy folding panels to lift. A simple rotation of the lock lever and the cover retracts into **ROLL-N-LOCK's** ultra-compact housing offering easy and instant access to the entire truck bed.

THE DIFFERENCE

A chain is only as strong as its weakest link. This phrase has never been more true than in the case of retractable truck bed covers. With a brief Internet search, many truck owners will find there to be an inherent security flaw built into the majority of aluminum retractable covers. After all, what good is aluminum when a thin piece of rubber is the only thing that stands between a thief and the contents of your truck bed. By concealing its heavy-duty silicone hinge with an offset aluminum seam, the **ROLL-N-LOCK A-SERIES** is resistant to knives and other sharp objects guaranteeing a never-before-seen level of truck bed security.

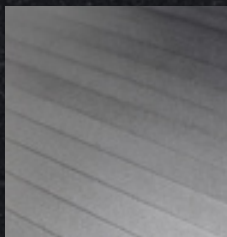
A-SERIES

FEATURES & BENEFITS



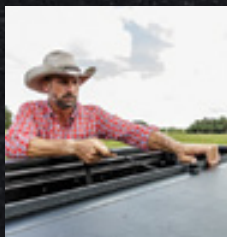
THEFT RESISTANT HINGE

The **A-SERIES** is bound together by a patent pending theft resistant hinge. With no exposed rubber seams, this aluminum cover provides greater security.



POWDER COATED ALUMINUM

Built to withstand the harshest of conditions, the unique, textured powder coat aluminum cover body provides a distinctive level of strength and durability.



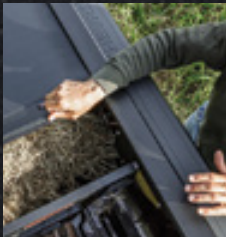
MULTIPLE LATCHING POSITIONS

With just a turn of the lever, the **ROLL-N-LOCK** bed cover slides open. As the cover is pulled back using the convenient built-in pull strap, the patented ratchet-style locking mechanism latches in place at 1/4, 1/2, 3/4 or fully-closed positions.



LOW PROFILE DESIGN

The **A-SERIES**' sleek appearance is enhanced by a low profile, aerodynamically-styled housing lid. Black, powder coated aluminum components define its rugged, yet refined appearance.



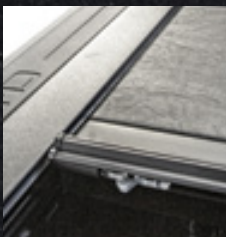
FINGER INSULATION GRIP

A finger insulator grip allows the handle to be grasped without fingertips being burned, promising hassle-free operation in the world's hottest climates.



CLAMP-ON INSTALLATION

ROLL-N-LOCK's patented clamp-on track design greatly simplifies the installation process while minimizing the need for drilling holes on most trucks.



BUILT-IN TAILGATE LOCK

Keep cargo safe with the integrated tailgate lock. The patented, four-point locking system provides instant security by simultaneously securing the tailgate and bed cover. *Not available on all models.*



TORSION SPRING EQUIPPED

A torsion spring drive makes opening the cover effortless. Its heavy-duty design and 3" aluminum casing provide years of reliable operation.



COMPACT HOUSING AND FLUSH HANDLE

Averaging only 7 1/4" deep, **ROLL-N-LOCK** provides the most compact housing of any retractable truck bed cover, preserving the truck's most valuable feature – cargo space.

CARGO MANAGER

ROLLING TRUCK BED DIVIDER

CARGO MANAGER®, an optional companion product for **ROLL-N-LOCK**®, is a movable bed divider that can be positioned every 3" along the length of the truck bed to manage and contain lightweight cargo. Controlled from the driver's side, **CARGO MANAGER** is repositioned by simply squeezing the control levers. **CARGO MANAGER**'s spring-activated mechanism then automatically pins the divider to each side track in the next nearest slot. When combined with a **ROLL-N-LOCK** retractable bed cover, this dynamic product combination gives truck owners not only the ability to cover and secure the contents of the truck bed, but also prevents objects from shifting in the bed when stopping or turning abruptly.



CARGO MANAGER

FEATURES & BENEFITS

FLIP-UP FEATURE

CARGO MANAGER quickly pivots up and out of the way for most loading chores. Its flip-up feature allows the divider to rotate 90 degrees, holding it parallel to, and 12" above, the bed floor. This is accomplished by simply depressing stops located at the ends of each track, rolling the divider back to allow the rear wheels to exit the tracks, rotating the divider 90 degrees and hanging it on the hooks provided. Long objects, such as ladders or lumber, may then be easily loaded under the divider.

EASY POSITIONING

CARGO MANAGER's spring-loaded control levers, located on the driver's side of the divider, enable the divider to be conveniently positioned every 3" along the bed length, without the necessity of walking to both sides of the truck.

LATERAL TIE-OFFS

Laterally-adjustable tie-offs and two bungee cords permit easy securing of any size object, from tool boxes to grocery bags.

EASY REMOVAL

Weighing only 11 pounds, **CARGO MANAGER** can be easily and quickly removed for loading larger items, like appliances, which cannot slide underneath. It's convenient, easy, and versatile!





DESIGNED AND MANUFACTURED IN THE USA

ROLL-N-LOCK CORPORATION
915 SOUTH DIXIE HIGHWAY EAST
POMPANO BEACH, FL 33060
1-800-952-7655

ROLLNLOCK.COM

